

OPERATIONS MANUAL



EUROTECH 1846 SAT

EUROTECH 1846 SUB

EUROTECH 1846 SAT

Professional Active Audio System

Thank you for purchasing our product. Before using the speaker, please read this instruction manual carefully to ensure correct use.

Specification:

- HF driver: 2 x 3.5", 1.4" VC
- MF driver: 4 x 6.5", 2" VC
- Amplifier: Class D-Bi amp
- Power RMS: 800W
- Input connector: XLR
- Output connector: XLR balanced
- DSP processor
- RS485 network

Cautions:

1. All operating instructions should be read before using this equipment.
2. To reduce the risk of electric shock, do not open the unit. There are NO REPLACEABLE PARTS INSIDE. Please refer servicing to a qualified service technician.
3. Do not expose this unit to direct sunlight or to a heat source such as a radiator or stove.
4. This unit should be cleaned only with a damp cloth. Avoid solvents or other cleaning detergents.
5. When moving this equipment, it should be placed in its original carton and packaging. This will reduce the risk of damage during transit.
6. DO NOT EXPOSE THIS UNIT TO RAIN OR MOISTURE.
7. DO NOT USE ANY SPRAY CLEANER OR LUBRICANT ON ANY CONTROLS OR SWITCHES.
8. Make sure ALL of your equipment is completely OFF and lower ALL VOLUME, LEVEL & GAIN controls before connecting the speaker.
9. ONLY LINE LEVEL SIGNALS CAN BE SENT TO YOUR SPEAKER.

Disregarding any of the above will void your warranty!!!!

AMPLIFIER FUNCTION

1. RS 485 network data communication input: Use network data lines to connect RS485/USB converters to PC machines. Relevant operations can be performed through the software downloaded from PC.

Download link: <https://we.tl/t-DjWD2A0F7b>

The ACTIVE light flashes when the data is connected

2. RS 485 network data communication output: Used to connect multiple devices simultaneously.

The LINK lights on when the network is successfully connected to the next device.

3.Audio signal input: Used to connect mixer and other audio signal sources.

4. Audio signal output: Use XLR connector balanced or unbalanced.

5. Volume control.

6. High frequency control: Adjust the high frequency between -6dB and +6dB.

7. Power indicator.

8. Limiter indicator: The red light illuminated when the audio signal reaches the maximum output power of the speaker, the input signal will be restricted. Adjust the level control and HF control appropriately if the red light illuminated continuously.

9. Signal indicator: The LED lights up when signal input.

10. EQ mode selection: 5 modes can be selected (FLAT/LIVE/VOCAL/DJ/USER).

11. Power switch: Turns the system ON and OFF. Ensure that the system volume control is minimized when turned on.

12. Power supply inlet.



*Prepare a RJ45/USB converters if necessary

Make sure ALL of your equipment is completely OFF and lower ALL VOLUME, LEVEL & GAIN controls before connecting the speaker.

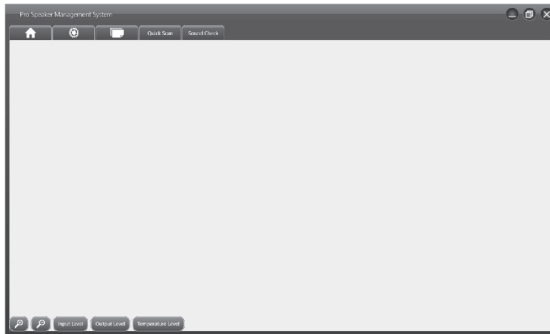
CONNECTIONS:

1. For this unit you can connect a mixer or other audio signal sources directly into your speaker. Use XLR connector to connect to the signal input(3) .

2. You can LINK additional speakers using the signal link(4) connection. The amplifier on your speaker will only power this speaker. If you LINK to additional speakers those speakers must be self amplified.

Pro Speaker Management System OPERATION

Home page

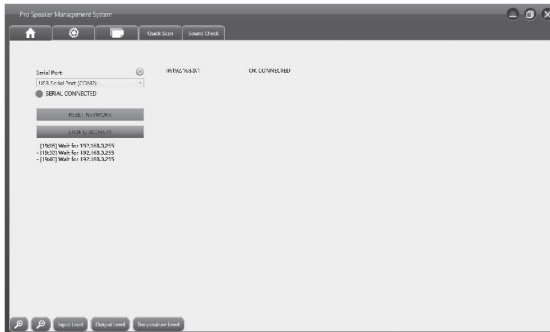


The Home screen is the first screen which appears after you launch the Pro Speaker Management System software. Access to main menu/System information/Load & Save/Quick Scan/Sound Check.

Also 5 quick access functions:

- Zoom + : To maximize blocks on main menu page.
- Zoom - : To minimize blocks on main menu page.
- Input Level : Press this button for a quick view of input level in all speaker blocks.
- Output Level : Press this button for a quick view of output level in all speaker blocks.
- Temperature level: Press this button for a quick view of amplifier temperature level in all speaker blocks.

Quick Scan page



- Connect your speaker(s) to the RS485 computer interface.
- Check if the right PORT is selected for your RS485 interface.
- Press "RESET NETWORK".
- Press "DEVICE DISCOVERY" button, to find the speaker(s) connected to the RS485 network.
 - Once the discovery finished, the message "Stop Discovery" will appear.
 - The connected speakers will appear.
- Press "START CONTROL" to access speaker's features and controls.

NOTE: In this Quick Scan page , you have the DEMO function which allows you to have a look on general features and functions of the "Pro Speaker Management System" without connecting any speaker.

Home page with **SPEAKER BOX**



Once your speaker detected on the RS485 network, you can START CONTROL.

The “speaker box” of your EUROTECH 1546 SAT is now accessible.

- The green light on top left of the box confirms your EUROTECH 1546 SAT system is well connected on network.

- 3 main functions are available:

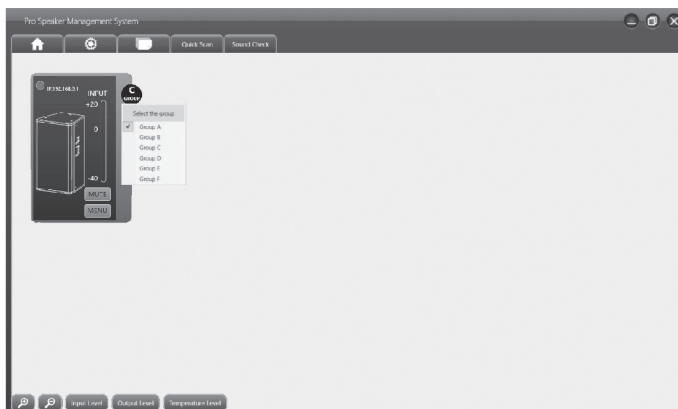
- **(Group selection)**
- **(MUTE)**
- **(MENU)**

Group selection:

Very convenient if you want to adjust several speakers at same time.

Example: If you have 2x EUROTECH 1546 SAT systems connected. one on right side and one on left side, you can adjust crossover parameters, EQ parameters, levels ... on both speakers at same time.

Just select the same group for the 2 systems.



NOTE: Up to 6 groups of speakers can be created.

MUTE:

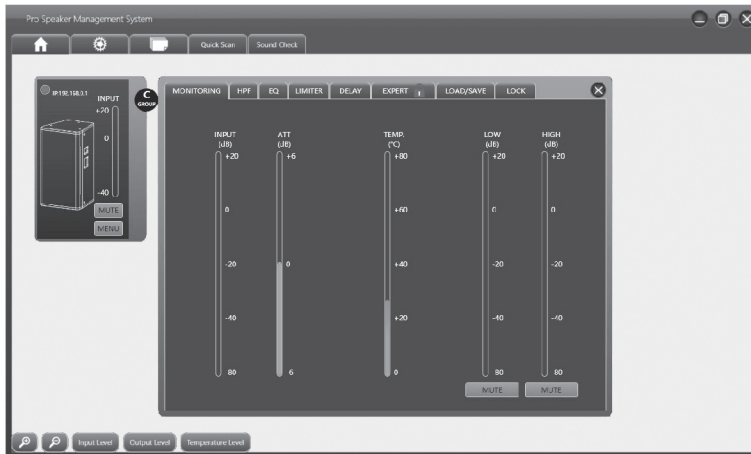
Press this button to mute the complete system.

NOTE:

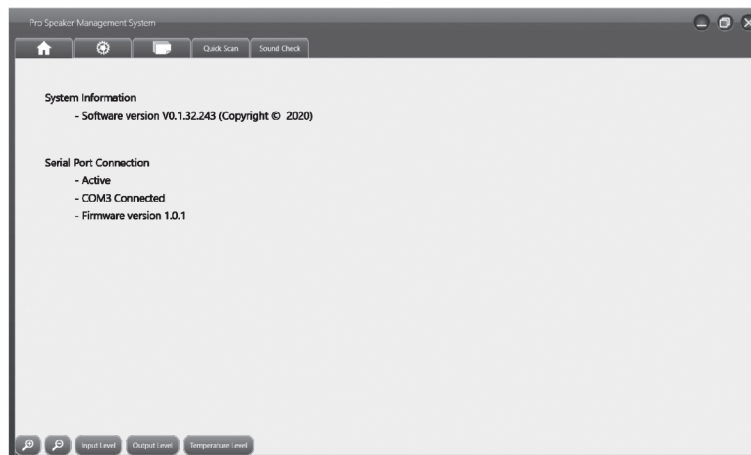
You can press any “quick access button” (Input LEVEL, Output LEVEL or Temperature LEVEL) at any time. The speaker box will display the LEVEL selected.

MENU:

Press this button to access speaker parameters.

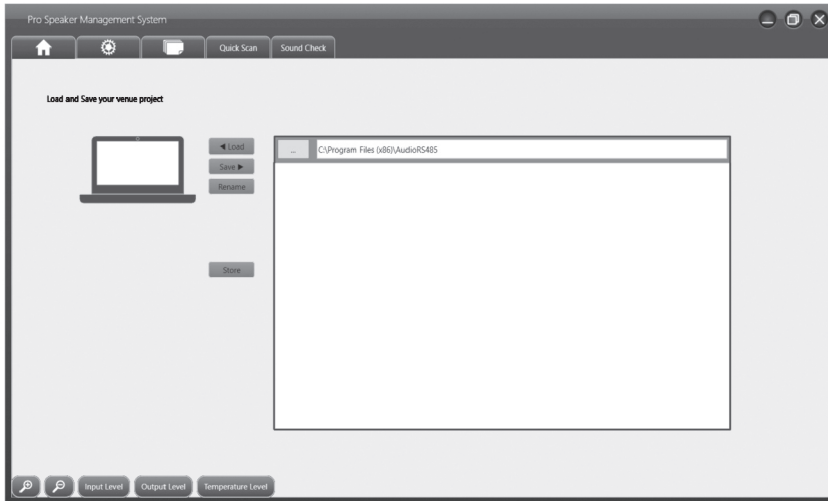


System information page



Displays your connection status and the software version.

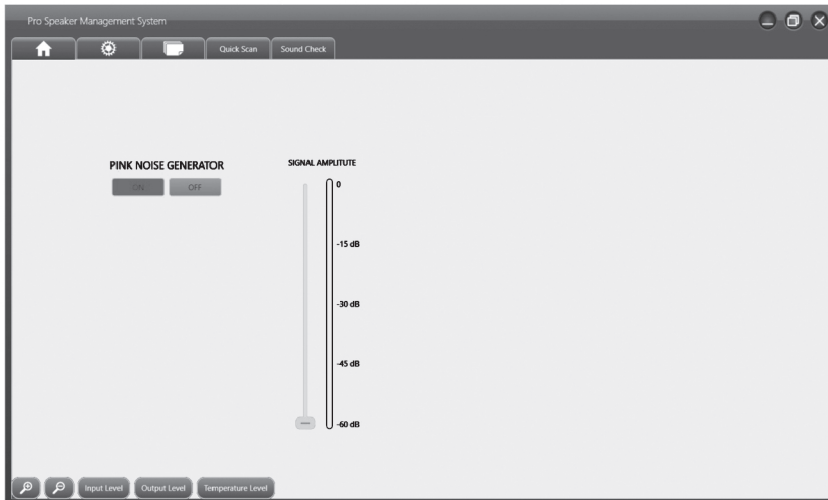
Load & Save page



- Save your project, Load a project, Rename a project

Project files will be saved in your computer system file, in folder "AudioRS485" automatically created when you have installed the Pro Speaker Management System in your computer.

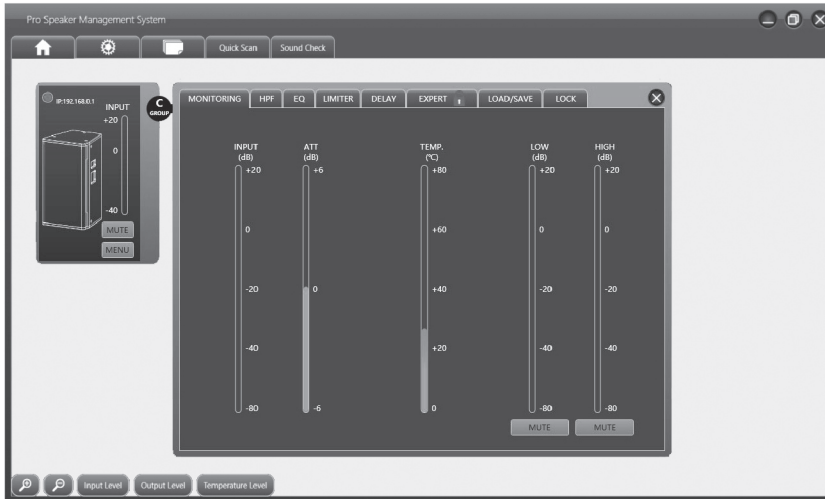
Sound Check Page



Very useful tool for your sound checking. Turn "ON" PINK NOISE GENERATOR and adjust your speaker SPL curve with external spectrum analyzer.

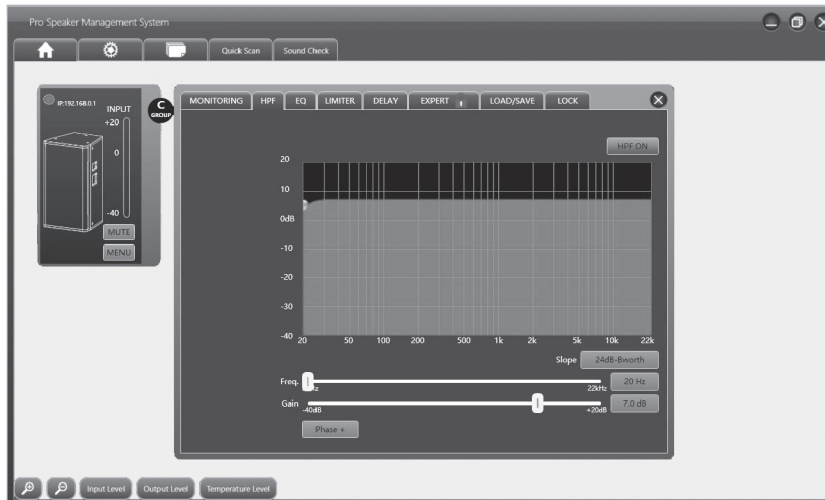
SPEAKER BOX (MENU)

Monitoring Page



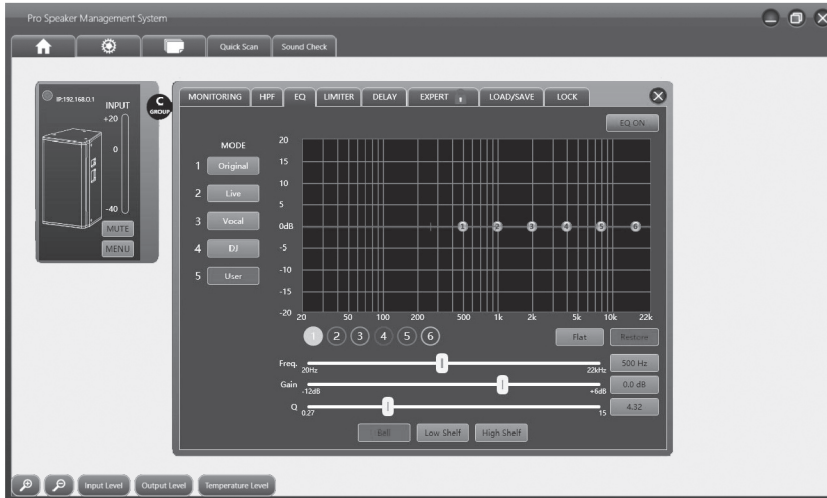
Monitor your system in real-time. From this page you can separately MUTE the top speaker and the Sub bottom speaker.

HPF Filter Page



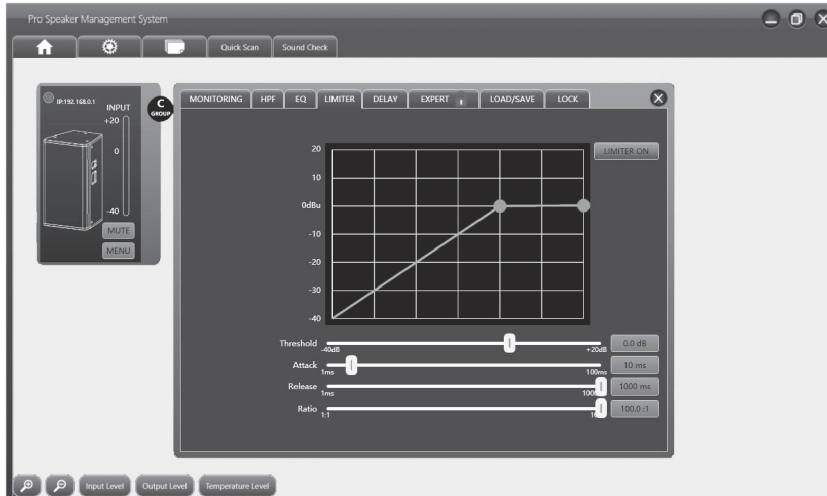
Adjust here the low-cut frequency to protect your system or to adjust low cut frequency if you use an extra SUBWOOFER.

EQ Page



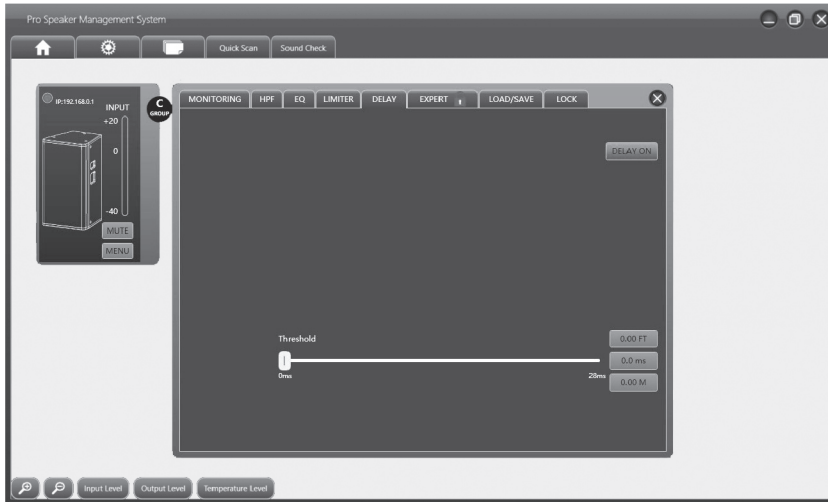
This EQ page is for general EQ of your system. This is a parametric EQ with 6 EQ points. You can adjust Frequency, Gain and Slope for each separate EQ point. You can select "Bell", "Low Shelf" or "High Shelf" curve. Also available on this page the "MODE" button, to select one of the 5 EQ presets.

Limiter Page



Protect your system. As a professional limiter section, you can adjust: Threshold, Attack, Release and Ratio adjustments.

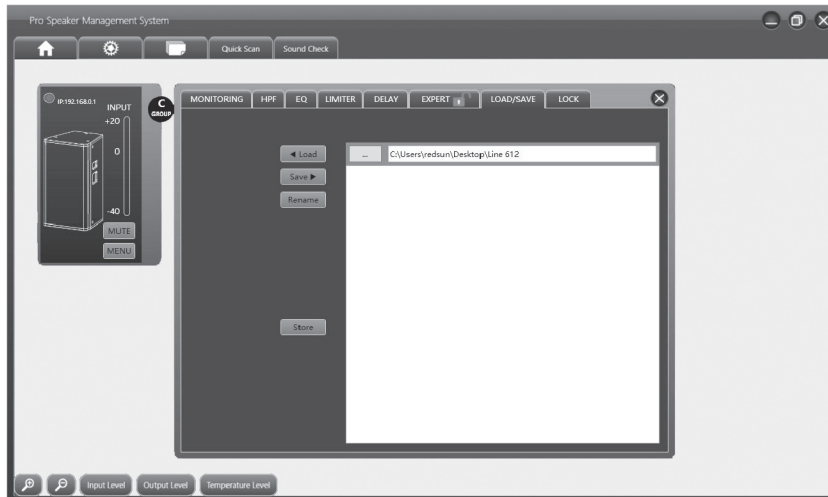
Delay Page



You may need to add delay on your speaker system depending on its position in your installation. You don't need external speaker management system. You can do it directly with the EUROTECH 1546 SAT software.

To help you on delay adjustment , the delay is displayed in M(meter), ms(Millisecond time) and FT(feet)

Load & Save page



-Save your project, Load a project, Rename a project

Project files will be saved in your computer system file, in folder "AudioRS485" automatically created when you have installed **the Pro Speaker Management System** in your computer.